

Turnbridge Equities is privately-held, vertically-integrated real estate investment and development firm with offices in New York, Los Angeles, Washington, DC, Miami, and Austin. Turnbridge makes certain real estate investments through its SEC registered investment advisor, Turnbridge RE Fund Management Company I LLC. Turnbridge's full service platform and extensive relationships enable Turnbridge to acquire, develop, reposition, and operate real estate and generate value for its investors and partners. Turnbridge and its principals seek to bring high levels of creativity and thought leadership to drive the results of each of its investments. With a track record of implementing successful investment strategies, Turnbridge has capitalized on emerging trends and monetized value in advance of market shifts.

## Our Story

Turnbridge is built on a tenacious passion for real estate investing, and exhaustive resourcefulness to sourcing and executing real estate investments, and a resolute focus on executing the firm’s strategies on a daily basis. Turnbridge has established a reputation as a transparent, high-integrity firm with a strong track record of success. Since inception, Turnbridge has developed a track record of over \$700 million in total capitalization in all asset classes, while its leadership team has completed over \$25 billion in aggregate transaction volume throughout their careers with leading real estate developers, institutional investors and financiers.

## Our Strategy

Turnbridge’s approach is driven by our vertical integration, strategic vision and focus on execution. We believe that our success hinges on careful market selection, strong sourcing capabilities, comprehensive due diligence, detailed financial analysis, and methodical execution. Our disciplined investment approach includes ground-up development and repositioning opportunities in assets with significant value-add potential, while we always focus on managing downside risk. Our investment strategies are informed through macro-economic and demographic research, coupled with detailed local market knowledge and relationships.

## Our Values

Above all else, Turnbridge values honesty and integrity.

Turnbridge is intently focused on building and enhancing long-lasting relationships and creating new partnerships.

Turnbridge looks to add value to its real estate investments through its passion, hard work, experience and creativity.

## Portfolio

ALL	AUSTIN PORTFOLIO	DISTRESSED RETAIL	LAST MILE INDUSTRIAL	MIAMI PORTFOLIO	MISSI
-----	------------------	-------------------	----------------------	-----------------	-------

(<https://www.turnbridgeeq.com/portfolio/austin-cityview-apartments-copy/>)

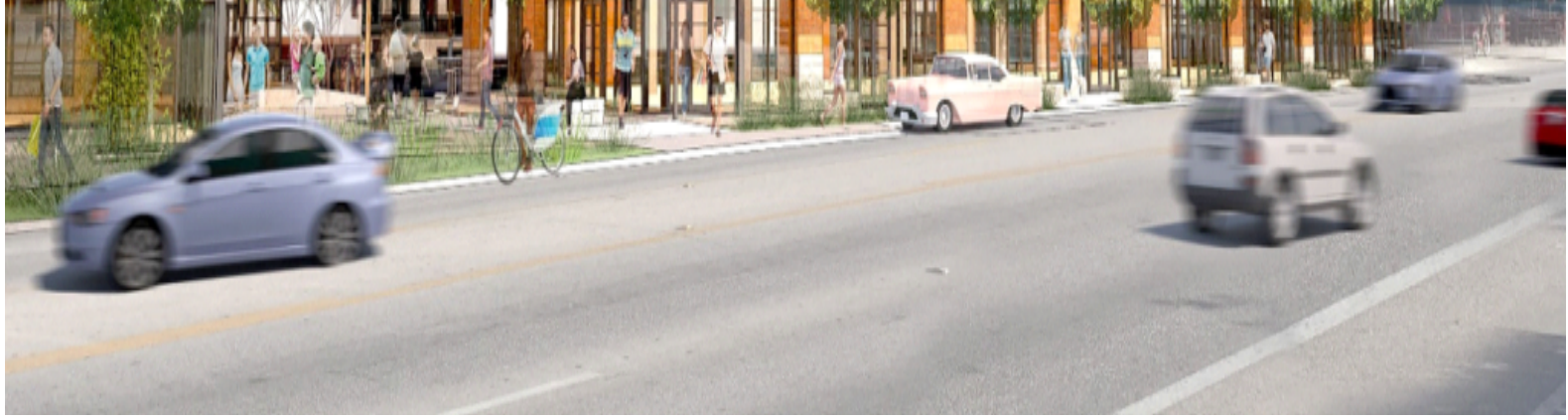


(<https://www.turnbridgeeq.com/portfolio/austin-cityview-apartments-copy/>)

(<https://www.turnbridgeeq.com/portfolio/austin-music-lane/>)



(<https://www.turnbridgeeq.com/portfolio/austin-music-lane/>)



(<https://www.turnbridgeeq.com/portfolio/austin-state-house-apartments/>)



(<https://www.turnbridgeeq.com/portfolio/austin-state-house-apartments/>)



(<https://www.turnbridgeeq.com/portfolio/bronx-ny-980-e-149th-street/>)



(<https://www.turnbridgeeq.com/portfolio/brooklyn-2300-linden-blvd/>)  
BROOKLYN, NY: 2300 LINDEN BLVD. ([HTTPS://WWW.TURNBRIDGEEQ.COM](https://www.turnbridgeeq.com))...

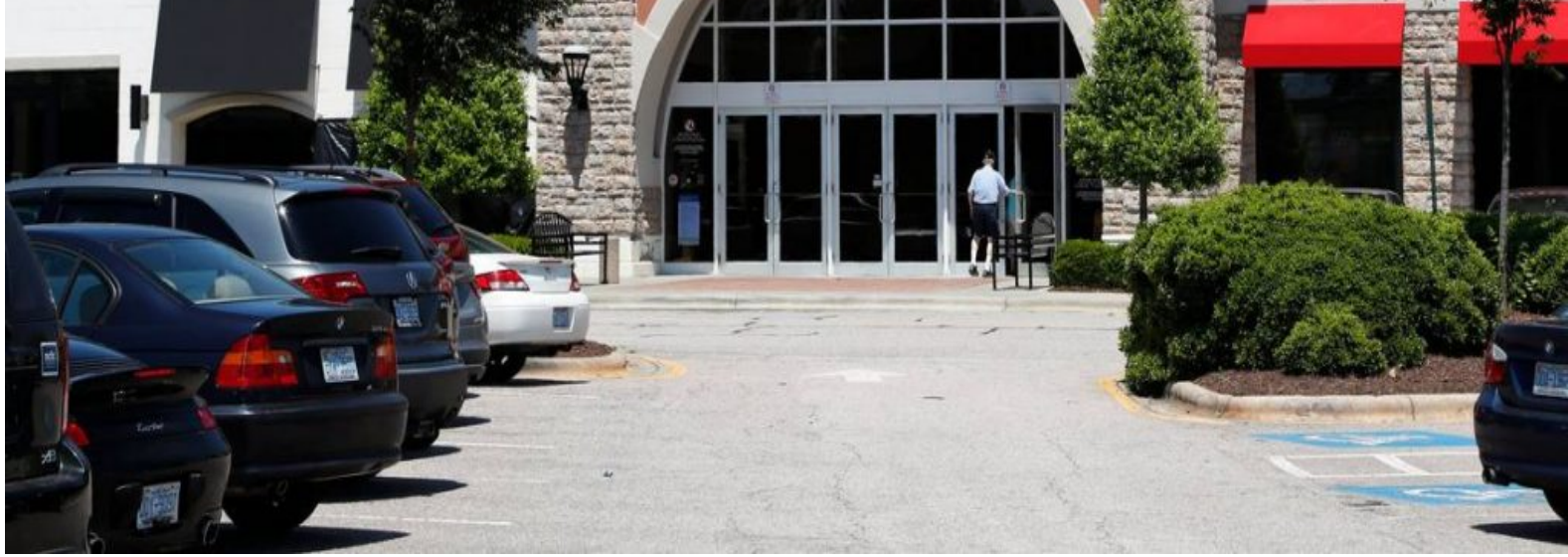


(<https://www.turnbridgeeq.com/portfolio/brooklyn-multifamily-portfolio/>)



(<https://www.turnbridgeeq.com/portfolio/cary-nc-cary-towne-center/>)





(<https://www.turnbridgeeq.com/portfolio/chantilly-14700-lee-road/>)



(<https://www.turnbridgeeq.com/portfolio/chantilly-14700-lee-road/>)  
CHANTILLY, VA: 14700 LEE ROAD (<https://www.turnbridgeeq.com/por...>) →



(<https://www.turnbridgeeq.com/portfolio/herndon-va-460-herndon-parkway/>)  
HERNDON, VA: 460 HERNDON PARKWAY (<https://www.turnbridgeeq.com/...>) →



(<https://www.turnbridgeco.com/portfolio/miami-6th-washington-assemblage/>)  
MIAMI, FL: 6TH & WASHINGTON ASSEMBLAGE ([HTTPS://WWW.TURNBRIDG...](https://www.turnbridgeco.com/portfolio/miami-6th-washington-assemblage/))



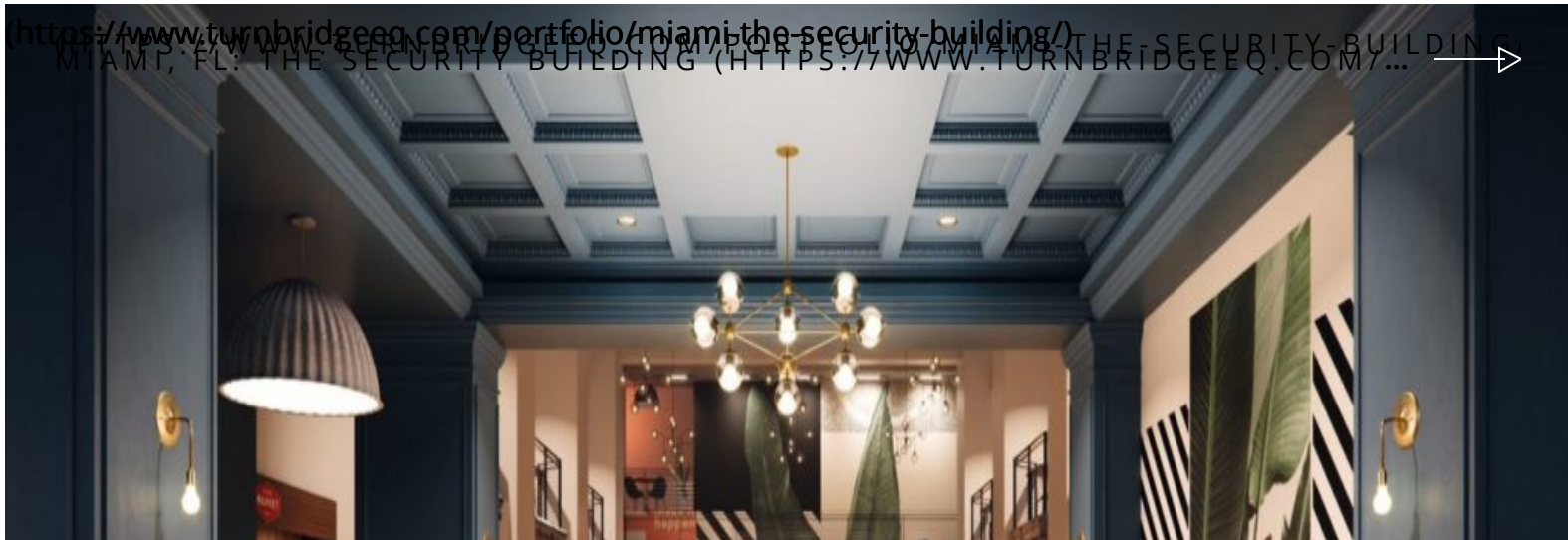




(<https://www.turnbridgeeq.com/portfolio/miami-7th-washington-assemblage/>)



(<https://www.turnbridgeeq.com/portfolio/miami-7th-washington-assemblage/>)



(<https://www.turnbridgeeq.com/portfolio/miami-the-security-building/>)



(<https://www.turnbridgeeq.com/portfolio/manhattan-354-bowery/>)



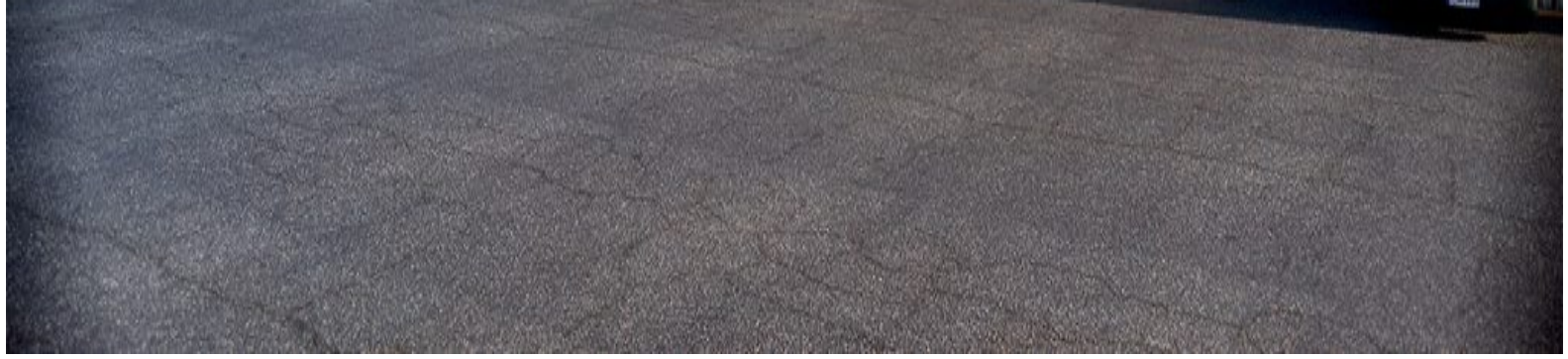
(<https://www.turnbridgeeq.com/portfolio/manhattan-354-bowery/>)  
NEW YORK, NY: 354 BOWERY (<https://www.turnbridgeeq.com/portf...>) →

(<https://www.turnbridgeeq.com/portfolio/newark-nj-ballantine-brewery/>)  
(<https://www.turnbridgeeq.com/portf...>)



(<https://www.turnbridgeeq.com/portfolio/new-jersey-100-jefferson-road-parsippany/>)  
PARSIPPANY, NJ: 100 JEFFERSON ROAD (HTTPS://WWW.TURNBRIDGEEQ.CO...)





# Team

**DARRELL AREVALO**

Managing Director, Development & Construction

[View Bio](#)

**JASON DAVIS**

Managing Director

[View Bio](#)

**ELI EISENSTADT**

Associate, Development & Construction

[View Bio](#)

**ANDREW JOBLON**

Founder/Managing Principal

[View Bio](#)

**MATTHEW KING**

Director, Acquisitions & Development

[View Bio](#)

**RYAN NELSON**

Managing Principal

[View Bio](#)

**ELIE NOROWITZ, CPA**

Vice President of Finance

[View Bio](#)

**ROGER PLOURDE**

Principal

[View Bio](#)

**KEVIN TISEO, P.E.**

Director, Development & Construction

[View Bio](#)

**JESSICA WALD, ESQ.**

General Counsel

[View Bio](#)

**GRAEME WEAVER**

Senior Analyst

[View Bio](#)


**KEVIN YANG**


Analyst

[View Bio](#)

## Contact


---

 4 Bryant Park, Suite 200 New York, NY 10018


 212-651-7272

---

 6420 Wilshire Blvd, Suite 1060 Los Angeles, CA 90048

 310-299-4111

---

 4800 Hampden Lane, Suite 200 Bethesda, MD 20814

---

 [acquisitions@turnbridgeeq.com](mailto:acquisitions@turnbridgeeq.com) (acquisitions@turnbridgeeq.com)

*Your Name \**

*Your Email \**

*Your Subject*

*Your Website*

*Your Message* \*

**SUBMIT**

**TURNBRIDGE EQUITIES © 2018**

Turnbridge Equities, through affiliated entities, privately owns the following properties, which were acquired prior to the formation of the SEC registered investment advisor and are not owned by Turnbridge RE Fund Management Company I LLC or its affiliates: 6th & Washington Assemblage, 7th & Washington Assemblage, CityView Apartments, Music Lane, State House Apartments, The Security Building, Brooklyn Multifamily Portfolio and 345 Bowery.