

This is what bravery would look like if bravery were a place.

We are the home for brave ideas. The home for the fearless and the intrepid. For those unafraid to challenge the status quo to better the world. So for those ready to dream bigger than big, welcome to a place to call your own.

[WATCH VIDEO](#)

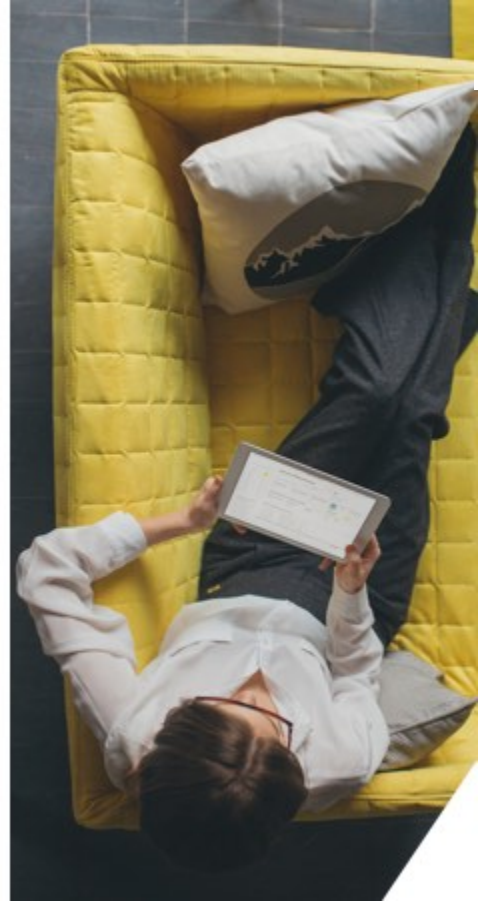
People first. Buildings second.

This is bravery inspired by people. Thinkers. Doers. Makers. Builders. Because some of the smartest people in the world deserve to have a place to call their own, we are building one. And this home is so much more than just a home. It's a launching pad for innovation and the ideas that could change the world.

So where better to build your new home for brave ideas.

Cambridge Crossing is an innovation community in East Cambridge, connected to Kendall Square and in the heart of Greater Boston. This 43-acre mixed-use transit-oriented development is purposefully designed to empower interactions and spark breakthroughs. Here, in the capital for intellectual thinking, life sciences and technology will flourish. And alongside, the way people live and play will thrive.

THE LOCALE



Seeing is believing



Philips to move North American Headquarters to Cambridge Crossing

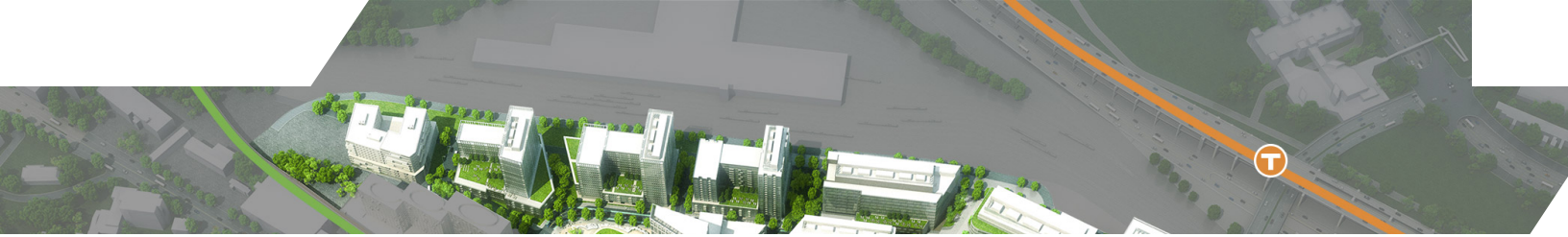
and to welcome Philips North America as the lead tenant at 250 North Street
securing 350,000 SF for its North American Headquarters in Q1 2020.

43

acres connected to what is
believed to be the world's
**highest concentration of
intellectual capital**



Take a look around



CX Site Overview



Something incredible is rising in Cambridge.

And here is your exclusive invitation to be a part of it. We want to collaborate with driven, courageous thinkers and makers who share our vision. Cambridge Crossing is the place for leaders and teams who know that the spark of real innovation can strike at anytime.

[CONTACT US](#)

[DOWNLOAD BROCHURE](#)

Follow us on social

[THE NEIGHBORHOOD](#)

[WHAT'S INSIDE](#)

[NEWS & EVENTS](#)

[CONNECT](#)



[LEASING INFORMATION](#)

Mark C. Roopenian

Cell (617) 633-19
Office (617) 914-86
mroopenian@divcowest.com



Copyright © 2019 DivcoWest. All Rights Reserved.

Statements herein are based on current expectations, opinions and beliefs of DivcoWest, however there is no guarantee that such objectives will be met. The photographs appearing herein are computer and/or artist renderings to reflect the planned scale and spirit of the development and are intended for informational purposes only. All square footages and dimensions are approximate and subject to normal construction variances and tolerances.