

Bloom your 401k.

Connect your company-sponsored retirement account and see how you're doing in minutes!

Start now.



THE
WALL STREET
JOURNAL

"One of the best online tools for retirement planning."

Forbes

"Making the complex world of 401ks more comprehensible."

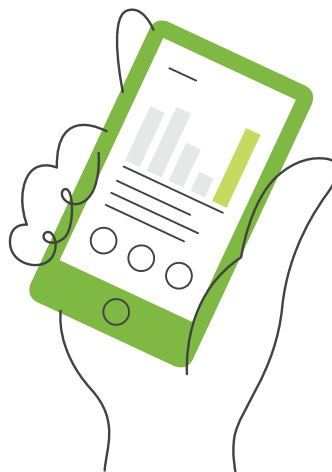
FAST
COMPANY

"One of the World's Top 10 Most Innovative Companies of 2015 in Personal Finance."

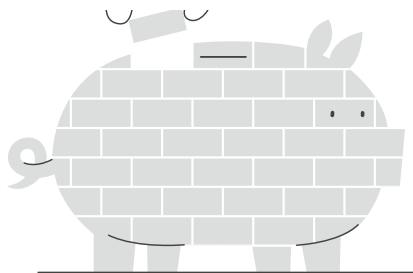
Simply link your existing retirement account.

Securely connect to bloom to find out the health of your 401k, 403b, 401a, 457 or TSP. Our analysis is truly FREE.

How bloom works.->



Build the best

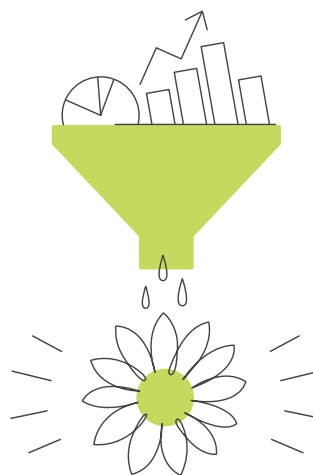


You can't control the market, but you can control how you invest. Bloom can help you find the best 401k funds for your situation.

More about our philosophy...>

See how you're doing at a glance.

Log in to see your investments simply represented as a flower or dig in to account details for more information.



We are serious about security.

256-bit encryption, bank-level security and third party verification are just the beginning of our commitment to keeping your information super safe.



Put the power of an advisor at your fingertips.

Get the smarts of a financial advisor without the price tag. We're here to help with your 401k.... and beyond!

Bloom is estimated to save our clients

\$

1,052,303,589

*

in lifetime investment fees.

Start with a free analysis
of your 401k.

No strings attached.

[Start now.](#)

[Facts and Stats](#)
[Why bloom](#)

[Market Drop FAQs](#)
[Fees Calculator](#)

Features

[Investment Selection](#)
[Reducing Fees](#)
[Suspicious Activity Alerts](#)
[Rebalancing](#)
[Market Guidance](#)
[Ask an Advisor](#)

Legal

[Terms and Conditions](#)
[Privacy Policy](#)
[Security](#)
[All Legal](#)



The information is provided for discussion purposes only and should not be considered as investment advice. Bloom is limited to the funds available in your employer sponsored retirement plan. There is no guarantee bloom can or will reduce your fund expenses. Bloom relies on the ability to receive updated account and transaction information. We do not guarantee we will be able to provide account monitoring to all accounts.

* Hidden Investment Fee Savings projection based on median bloom client data including 401k balance of \$49,805 assuming \$5,000 annual contribution, median pre-bloom investment expense ratio of 0.47%, median post-bloom investment expense ratio of 0.19%, an allocation mix of 96% stocks with a 7% gross annual return and 4% bonds with a 3% gross annual return, 27 years until retirement and the number of active bloom clients. All median data as of August 5, 2018.