

8:30 AM – 5:30 PM

Monday to Friday ⓘ

20757 Parkside Circle

Potomac Falls, VA 20165 📍

703-871- 5141

Tattersall Financial (<http://tattersallfinancial.com/>)

Tattersall Financial Services Financial Planning & Employee Benefits Professionals Since 1996

[Home \(<http://tattersallfinancial.com/>\)](http://tattersallfinancial.com/)

[About Us](#) ▾

[Services](#) ▾

July 9, 2019



[Contact Us \(<http://tattersallfinancial.com/contact-us/>\)](http://tattersallfinancial.com/contact-us/)
 [\(http://tattersallfinancial.com/\)](http://tattersallfinancial.com/)



20757 Parkside Circle
Potomac Falls, VA 20165



8:30 AM – 5:30 PM
Monday to Friday



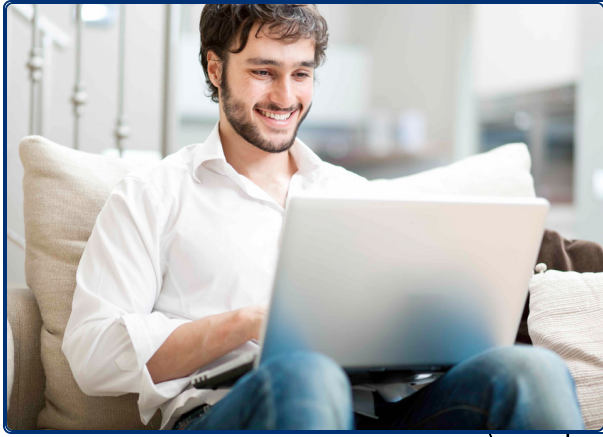
703-871- 5141
[Contact Us \(/contact-us/\)](/contact-us/)

[Home \(<http://tattersallfinancial.com/>\)](http://tattersallfinancial.com/)

[About Us](#) ▾

[Services](#) ▾

[Contact Us \(<http://tattersallfinancial.com/contact-us/>\)](http://tattersallfinancial.com/contact-us/)



(/services/comprehensive-financial-planning/)

(//tattersallfinancial.com/)

Comprehensive Financial Planning

Home (<http://tattersallfinancial.com/>) [About Us](#) [Services](#)
(<http://tattersallfinancial.com/services/comprehensive-financial-planning/>)

[Contact Us](http://tattersallfinancial.com/contact-us/) (<http://tattersallfinancial.com/contact-us/>)
We understand you're saving for all different life events: retirement, a house or simply to build wealth.



(/services/wealth-management/)

Wealth Management (/services/wealth-management/)

Accumulation of wealth is key to working toward your financial goals. Appropriate risk assessed investments, modeling of investment timeframe and professional management is key to having confidence in your investing.



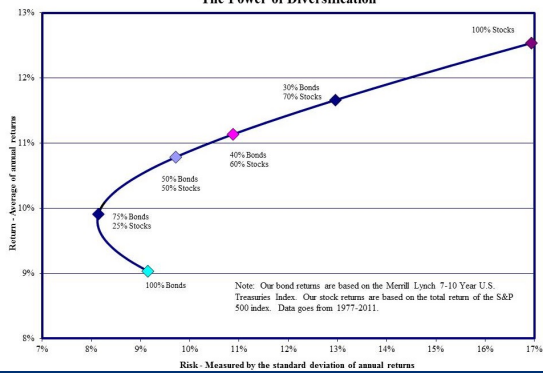
(/services/employee-benefit-solutions/)

Employee Benefit Solutions (/services/employee-benefit-solutions/)

It is our belief that business owners view employee benefits as a faucet on the back of their business that's running all night long!

An Efficient Frontier The Power of Diversification

(/services/your-efficient-frontier/)



Your Efficient Frontier (/services/your-efficient-frontier/)

Do you know your Efficient Frontier? Are you in a “Comfort Zone” of confidence such that your financial plans can weather unfavorable market conditions?

About Us

We have over 23 years of experience providing financial strategies for both businesses and individuals. Our comprehensive approach to knowing our clients, their goals, and concerns enables us to create financial strategies to help address their needs.

Frequently Asked Questions

- What kind of financial strategies can you provide to my business?
- Do you offer individually tailored investment plans?
- How would I go about planning for my retirement?

Check everyone you work with financially.



<https://brokercheck.finra.org/individual/summary/1802385>

Your Name

I would like to discuss

Your Email Optional

Your Phone Number

Submit

Tattersall Financial Services

We provide comprehensive financial advice to both individuals and businesses. With over 25 years of experience, we'll help you to monitor the critical variables that will impact your financial goals.

Explore

[Home \(http://tattersallfinancial.com/\)](http://tattersallfinancial.com/)

[About Us \(http://tattersallfinancial.com/about-us/\)](http://tattersallfinancial.com/about-us/)

[Our Team \(http://tattersallfinancial.com/about-us/our-team/\)](http://tattersallfinancial.com/about-us/our-team/)

[Our Strategic Partners \(http://tattersallfinancial.com/about-us/our-strategic-partners/\)](http://tattersallfinancial.com/about-us/our-strategic-partners/)

[Our Story \(http://tattersallfinancial.com/about-us/our-story/\)](http://tattersallfinancial.com/about-us/our-story/)

[Contact Us \(http://tattersallfinancial.com/contact-us/\)](http://tattersallfinancial.com/contact-us/)

Disclaimer

Securities offered through LPL Financial, Member **FINRA** (<http://www.finra.org/>)/**SIPC** (<https://www.sipc.org/>). Investment Advice offered through Wealthcare Advisory Partners a registered investment advisor. Wealthcare Advisory Partners and Tattersall Financial Services, LLC are separate entities from LPL Financial. The LPL Financial Registered Representatives associated with this site may only discuss and/or transact Securities business with residents of the following states: AZ, DC, FL, KY, MA, MD, OH, PA, SC, TX, VA

Our Newsletter

Your email address

Sign Up

[Contact Us Now \(/contact-us/\)](/contact-us/)

 Facebook  LinkedIn

[Legal \(/site/legal/\)](/site/legal/)

[Sitemap \(/site/sitemap/\)](/site/sitemap/)

[Privacy Policy \(/site/privacy-policy/\)](/site/privacy-policy/)

© 2018 Tattersall Financial Services