



Investing in

NICHE, NON-CORRELATED ASSETS

[LEARN MORE \(/INVESTMENT-STRATEGY\)](/INVESTMENT-STRATEGY)

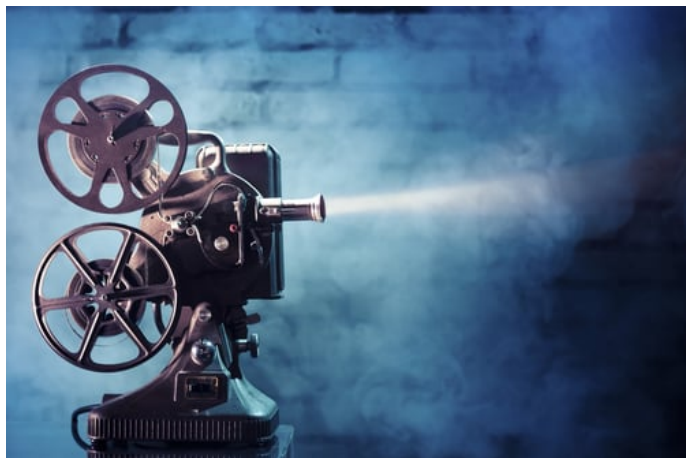
We invest in niche, non-correlated assets.

Cordillera Investment Partners is an investment management firm focused on investing in niche, non-correlated assets. These investments are generally in sectors that are not well understood, not

overcapitalized, and not correlated with traditional assets. Cordillera manages capital for endowments, foundations, family offices, wealth advisors, and other institutional investors.



(/firm-history)



(/team)

ABOUT (/INVESTMENT-STRATEGY)

Find out about our investment philosophy and firm history.

TEAM (/TEAM)

Meet our experienced team.

CORDILLERA INVESTMENT PARTNERS

info@cordillera-ip.com