

Toll Free: (877) 548.0541 (tel:1-877-548-0541) | Phone: (502) 413.6893 (tel:1-502-413-6893)



[\(https://www.facebook.com/wealthmdky/\)](https://www.facebook.com/wealthmdky/)



[. \(https://twitter.com/wealthMD\\_corp\)](https://twitter.com/wealthMD_corp)



[. \(https://www.instagram.com/wealthmd\\_corp/\)](https://www.instagram.com/wealthmd_corp/)

**wealthMD** (<http://wealthmd.net/>)

[Home \(Http://Wealthmd.Net/\)](http://Wealthmd.Net/)

[Board \(Http://Wealthmd.Net/Board/\)](http://Wealthmd.Net/Board/)

[Leadership \(Http://Wealthmd.Net/Leadership/\)](http://Wealthmd.Net/Leadership/)

[Service Request \(Http://Wealthmd.Net/Client\\_services/Service-Request/\)](http://Wealthmd.Net/Client_services/Service-Request/)

[Client Login \(Http://Wealthmd.Net/Client\\_services/Client-Login/\)](http://Wealthmd.Net/Client_services/Client-Login/)

[Blog \(Http://Wealthmd.Net/Blog/\)](http://Wealthmd.Net/Blog/)

[Philanthropy \(Http://Wealthmd.Net/Philanthropy/\)](http://Wealthmd.Net/Philanthropy/)

[Contact \(Http://Wealthmd.Net/Contact/\)](http://Wealthmd.Net/Contact/)

---



“We provide our clients an academic approach to investment and retirement management along with independent advice .”

– Nicole Tice Haines | M.B.A.



“Our firm is committed to delivering outstanding service on an individualized basis to each and every one of our clients.”

– Summer Jae Snead | B.S.B.A.

(<http://wealthmd.net/board/>).



(<http://wealthmd.net/board/>).

## Our Board

(<http://wealthmd.net/board/>).

(<http://wealthmd.net/leadership/>).



(<http://wealthmd.net/leadership/>)

## Leadership

(<http://wealthmd.net/leadership/>)

([http://wealthmd.net/client\\_services/service-request/](http://wealthmd.net/client_services/service-request/))



([http://wealthmd.net/client\\_services/service-request/](http://wealthmd.net/client_services/service-request/))

# Request Service

([http://wealthmd.net/client\\_services/service-request/](http://wealthmd.net/client_services/service-request/)).

(<http://wealthmd.net/blog/>).

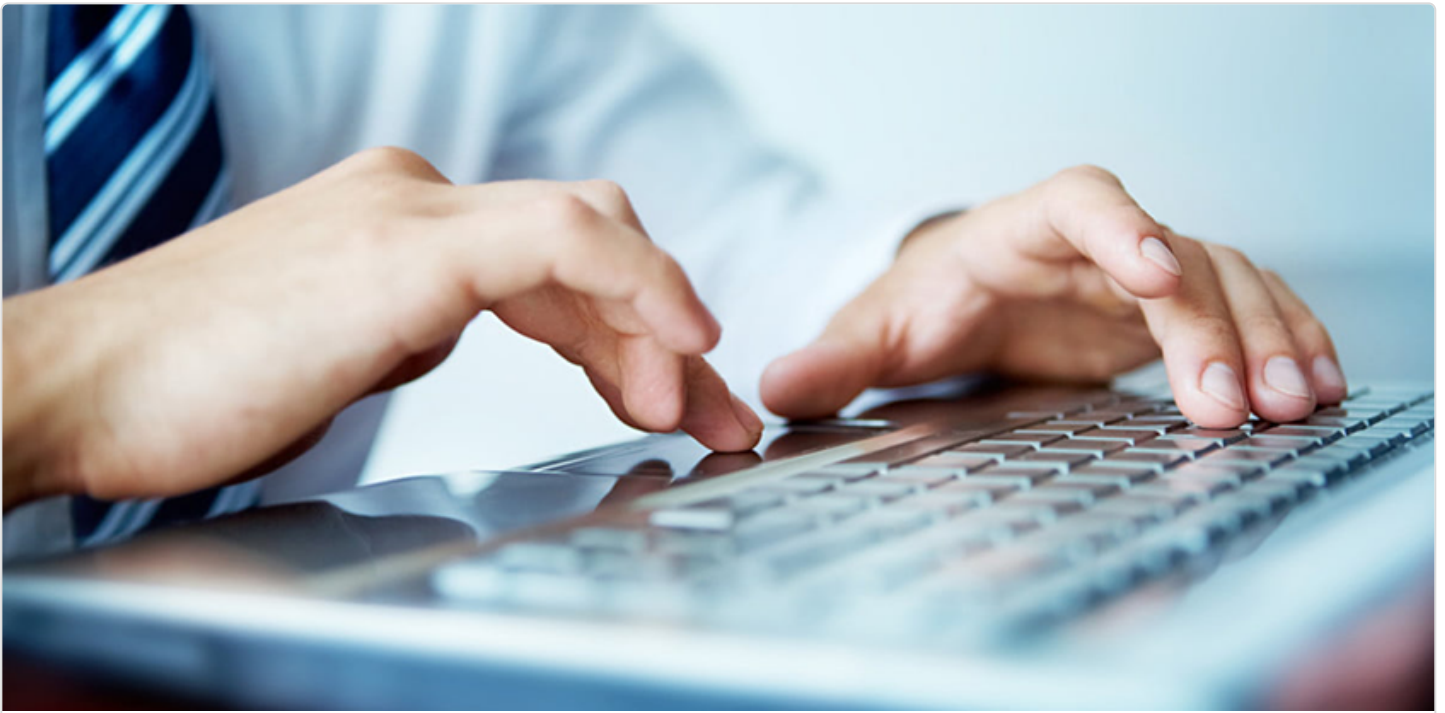


(<http://wealthmd.net/blog/>).

# Blog

(<http://wealthmd.net/blog/>).

([http://wealthmd.net/client\\_services/client-login/](http://wealthmd.net/client_services/client-login/)).



[\(http://wealthmd.net/client\\_services/client-login/\)](http://wealthmd.net/client_services/client-login/)

## Client Login

[\(http://wealthmd.net/client\\_services/client-login/\)](http://wealthmd.net/client_services/client-login/)

[\(http://wealthmd.net/contact/\)](http://wealthmd.net/contact/)



[\(http://wealthmd.net/contact/\)](http://wealthmd.net/contact/)

# Contact Us

[\(http://wealthmd.net/contact/\)](http://wealthmd.net/contact/)

---

[HOME \(HTTP://WEALTHMD.NET/\)](http://wealthmd.net/), [BOARD \(HTTP://WEALTHMD.NET/BOARD/\)](http://wealthmd.net/board/),  
[LEADERSHIP \(HTTP://WEALTHMD.NET/LEADERSHIP/\)](http://wealthmd.net/leadership/),  
[SERVICE REQUEST \(HTTP://WEALTHMD.NET/CLIENT\\_SERVICES/SERVICE-REQUEST/\)](http://wealthmd.net/client_services/service-request/),  
[CLIENT LOGIN \(HTTP://WEALTHMD.NET/CLIENT\\_SERVICES/CLIENT-LOGIN/\)](http://wealthmd.net/client_services/client-login/),  
[BLOG \(HTTP://WEALTHMD.NET/BLOG/\)](http://wealthmd.net/blog/), [PHILANTHROPY \(HTTP://WEALTHMD.NET/PHILANTHROPY/\)](http://wealthmd.net/philanthropy/),  
[CONTACT \(HTTP://WEALTHMD.NET/CONTACT/\)](http://wealthmd.net/contact/).



[\(https://www.facebook.com/wealthmdky/\)](https://www.facebook.com/wealthmdky/)



[\(https://twitter.com/wealthMD\\_corp\)](https://twitter.com/wealthMD_corp/)



[\(https://www.instagram.com/wealthmd\\_corp/\)](https://www.instagram.com/wealthmd_corp/)

Copyright © 2016 wealthMD Financial Management. All rights Reserved. [Disclaimer \(http://wealthmd.net/privacy-statement/\)](http://wealthmd.net/privacy-statement/).