

- WHAT WE OFFER (<http://onecharlespw.com/what-we-offer/wealth-protection/>)
 - Circle of Care (<https://onecharlespw.com/what-we-offer/wealth-protection-2/>)
 - Conscious Planning (<https://onecharlespw.com/what-we-offer/conscious-investing-2/>)
 - Sustainable Solutions (<https://onecharlespw.com/what-we-offer/sustainable-solutions-2/>)
 - Life Transitions (<https://onecharlespw.com/what-we-offer/life-transitions/>)
 - Services (<https://onecharlespw.com/what-we-offer/services/>)
- WHO WE ARE (<http://onecharlespw.com/who-we-are/about-us/>)
 - About Us (<https://onecharlespw.com/who-we-are/about-us/>)
 - Our Team (<https://onecharlespw.com/who-we-are/our-team/>)
 - The Focus Partnership (<https://onecharlespw.com/who-we-are/the-focus-partnership-2/>)
- Contact (<https://onecharlespw.com/contact/>)
- For Advisors (<https://onecharlespw.com/for-advisors-2/>)
- Client Access
 - OC Portal (<https://wealth.emaplan.com/ema/ria/onecharlesprivatewealth>)
 - Fidelity.com (<https://www.fidelity.com>)

One Charles Private Wealth (<https://onecharlespw.com>)

- WHAT WE OFFER (<http://onecharlespw.com/what-we-offer/wealth-protection/>)
 - Circle of Care (<https://onecharlespw.com/what-we-offer/wealth-protection-2/>)
 - Conscious Planning (<https://onecharlespw.com/what-we-offer/conscious-investing-2/>)
 - Sustainable Solutions (<https://onecharlespw.com/what-we-offer/sustainable-solutions-2/>)
 - Life Transitions (<https://onecharlespw.com/what-we-offer/life-transitions/>)
 - Services (<https://onecharlespw.com/what-we-offer/services/>)
- WHO WE ARE (<http://onecharlespw.com/who-we-are/about-us/>)
 - About Us (<https://onecharlespw.com/who-we-are/about-us/>)
 - Our Team (<https://onecharlespw.com/who-we-are/our-team/>)
 - The Focus Partnership (<https://onecharlespw.com/who-we-are/the-focus-partnership-2/>)
- Contact (<https://onecharlespw.com/contact/>)
- For Advisors (<https://onecharlespw.com/for-advisors-2/>)
- Client Access
 - OC Portal (<https://wealth.emaplan.com/ema/ria/onecharlesprivatewealth>)
 - Fidelity.com (<https://www.fidelity.com>)



OUR IMPACT

A “living well” plan that looks beyond your portfolio and is focused on your overall financial well-being.

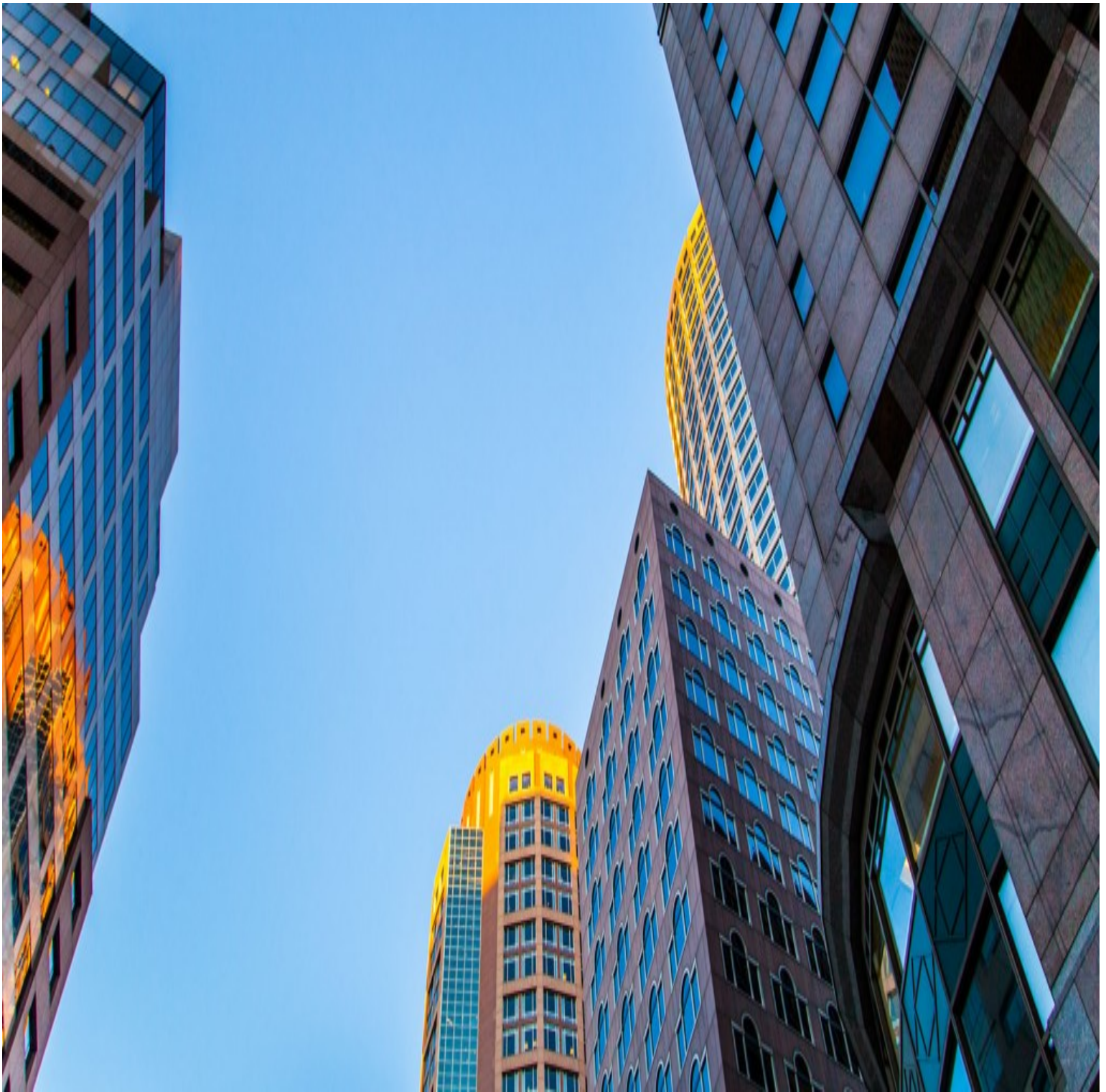
[Learn More \(http://onecharlespw.com/what-we-offer/wealth-protection-2/\)](http://onecharlespw.com/what-we-offer/wealth-protection-2/)



YOUR IMPACT

Investments that have purpose, are aligned with your beliefs and create value in the world.

[Learn More \(http://onecharlespw.com/what-we-offer/conscious-investing-2/\)](http://onecharlespw.com/what-we-offer/conscious-investing-2/)



IMPACTFUL

Sustainable strategies that connect positive social impact and positive bottom line performance.

[Learn More \(http://onecharlespw.com/what-we-offer/sustainable-solutions-2/\)](http://onecharlespw.com/what-we-offer/sustainable-solutions-2/)

-
-
-



Circle of Care

Circle of Care

You have worked hard for your money and we help you preserve and protect your wealth for the future.

Learn More

(<http://onecharlespw.com/what-we-offer/wealth-protection-2/>)



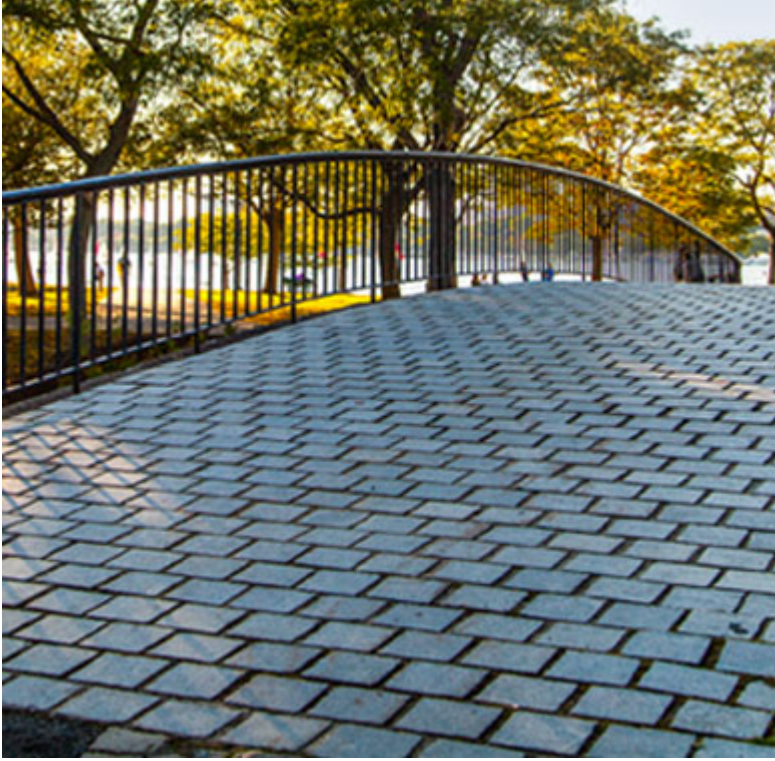
Conscious Planning

Conscious Planning

One Charles Private Wealth creates custom portfolio models that support your values and commitments.

Learn More

(<http://onecharlespw.com/what-we-offer/conscious-investing-2/>)

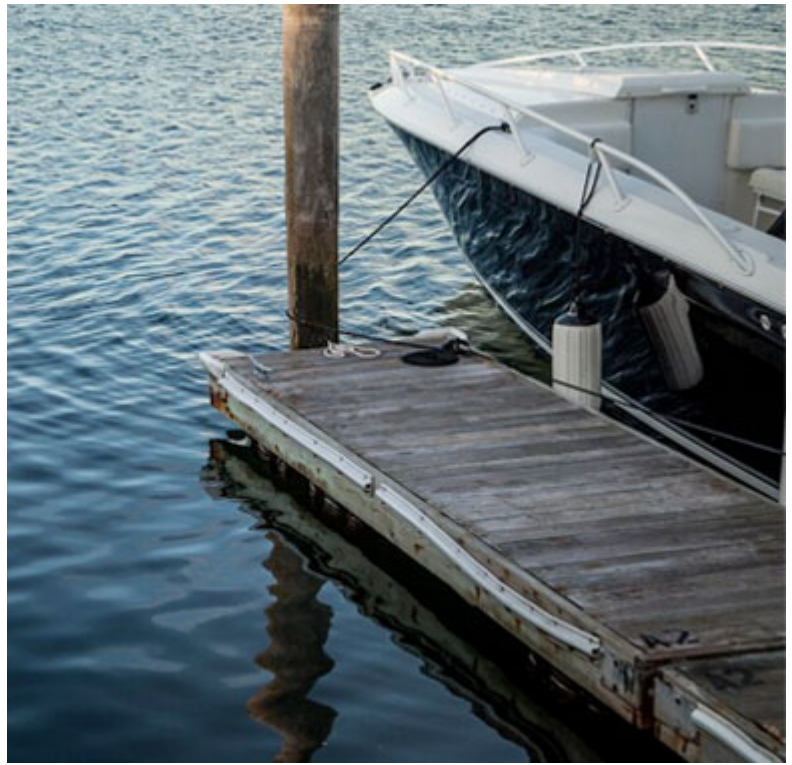


Life Transitions

Life Transitions

We know circumstances change and are here to advise you for continued success after major life events.

Learn More



(<http://onecharlespw.com/what-we-offer/life-transitions/>)
Sustainable Solutions

Sustainable Solutions

Investing to meaningfully and positively impact people's lives.

Learn More

(<http://onecharlespw.com/what-we-offer/sustainable-solutions-2/>)

The most important part of One Charles Private Wealth is you. By working with a select group of affluent business owners, executives and self-made individuals we have the time and resources to develop an in depth understanding of your life goals, concerns and needs. These relationships are built upon trust, honesty, respect, and are directed by our fiduciary responsibility. Our goal is to become your trusted advisor who educates and guides you through all financial aspects of your life. One Charles Private Wealth is a full-service wealth management firm with a national scope.

Contact Us (<http://onecharlespw.com/contact/>) Brokercheck®
(<http://brokercheck.finra.org/Search/Search?gclid=CKKgt9Cu6cwCFUwvgQodU-EJzA>)

One Charles Private Wealth (<https://onecharlespw.com>)

99 Derby Street, Suite 101, Hingham, MA 02043
617-337-4206 / info@onecharlespw.com (<mailto:info@onecharlespw.com>)

Site Map

- [Home \(https://onecharlespw.com/\)](https://onecharlespw.com/)
- [Circle of Care \(https://onecharlespw.com/what-we-offer/wealth-protection-2/\)](https://onecharlespw.com/what-we-offer/wealth-protection-2/)
- [Conscious Planning \(https://onecharlespw.com/what-we-offer/conscious-investing-2/\)](https://onecharlespw.com/what-we-offer/conscious-investing-2/)
- [Life Transitions \(https://onecharlespw.com/what-we-offer/life-transitions/\)](https://onecharlespw.com/what-we-offer/life-transitions/)
- [Sustainable Solutions \(https://onecharlespw.com/what-we-offer/sustainable-solutions-2/\)](https://onecharlespw.com/what-we-offer/sustainable-solutions-2/)
- [About Us \(https://onecharlespw.com/who-we-are/about-us/\)](https://onecharlespw.com/who-we-are/about-us/)
- [Our Team \(https://onecharlespw.com/who-we-are/our-team/\)](https://onecharlespw.com/who-we-are/our-team/)
- [Contact \(https://onecharlespw.com/contact/\)](https://onecharlespw.com/contact/)
- [For Advisors \(https://onecharlespw.com/for-advisors-2/\)](https://onecharlespw.com/for-advisors-2/)
- [Disclosure \(https://onecharlespw.com/disclosure/\)](https://onecharlespw.com/disclosure/)
- [Privacy Policy \(https://onecharlespw.com/privacy-policy/\)](https://onecharlespw.com/privacy-policy/)



(<https://www.linkedin.com/company/10303999?trk=tyah&trkInfo=clickedVertical%3Acompany%2CclickedEntityId%3A10303999%2Cidx%3A2-2-10%2CtarId%3A1447693341494%2Ctas%3Aone%20charles%20>)

© Copyright 2019, One Charles Private Wealth. All rights reserved.

One Charles Private Wealth and Purshe Kaplan Sterling Investments are not affiliated companies. Securities offered through Purshe Kaplan Sterling Investments, Member [FINRA \(http://finra.org/\)](http://finra.org/) [SIPC \(http://sipc.org/\)](http://sipc.org/). Headquartered at 18 Corporate Woods Blvd., Albany, NY 12211. Investments through PKS or RIA are: □NOT FDIC INSURED, NOT BANK GUARANTEED, MAY LOSE VALUE, INCLUDING LOSS OF PRINCIPAL, and NOT INSURED BY ANY STATE OR FEDERAL AGENCY.

Fidelity Investments is an independent company, unaffiliated with One Charles Private Wealth. Fidelity Investments is a service provider to One Charles Private Wealth. There is no form of legal partnership, agency affiliation, or similar relationship between your financial advisor and Fidelity Investments, nor is such a relationship created or implied by the information herein. Fidelity Investments has not been involved with the preparation of the content supplied by One Charles Private Wealth and does not guarantee, or assume any responsibility for, its content. Fidelity Investments is a registered trademark of FMR LLC. Fidelity Clearing & Custody Solutions[®] provides clearing, custody, or other brokerage services through National Financial Services LLC or Fidelity Brokerage Services LLC, Members NYSE, SIPC. 818857.1.0

Get Our Newsletter!

Sign up to learn more about One Charles and receive our Newsletter.

- First and Last Name*

- Email*

Thank you

×Close

Thanks for your submission. We will get in touch with you shortly.