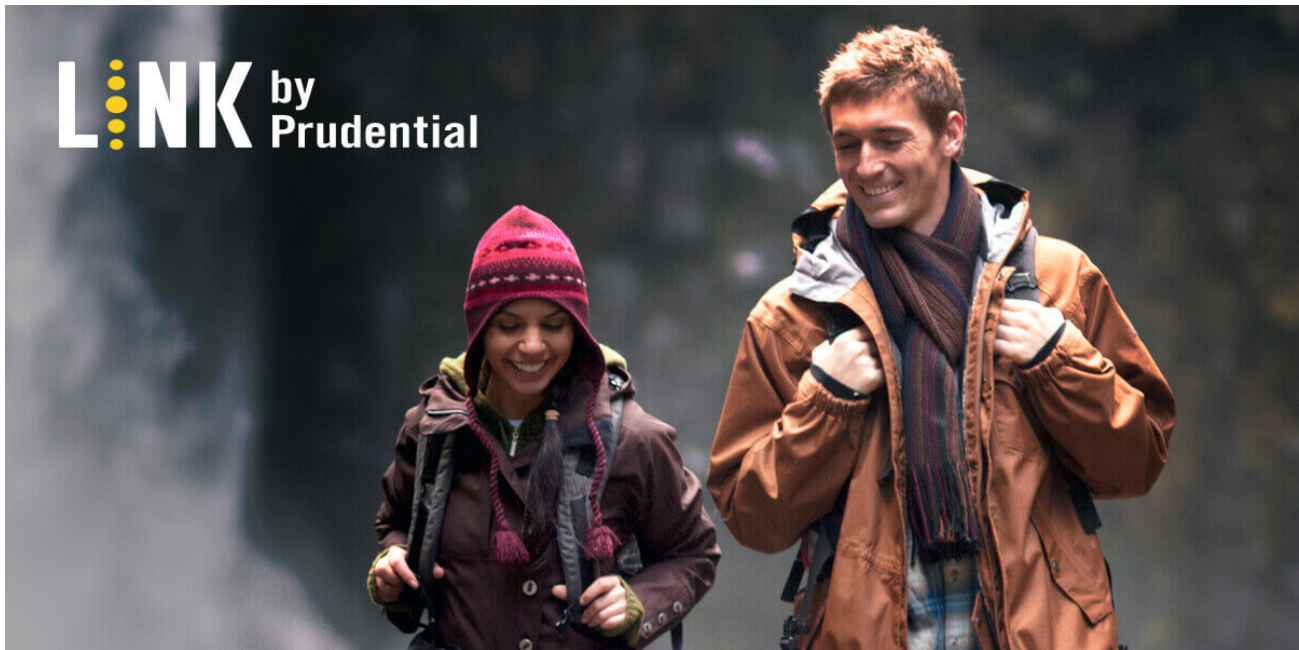


## Buy a Life Insurance Policy Online

Few things in life are more important than protecting your loved ones. Safeguard your family's financial future with life insurance from Prudential. It can be easy, fast and affordable.

[Buy a Policy \(https://www.prudential.com/personal/life-insurance/buy-life-insurance-online#/\)](https://www.prudential.com/personal/life-insurance/buy-life-insurance-online#/)



## Manage Your Money. Live Your Dream.

And achieve the retirement you've imagined. Get a glimpse of what it could take to get there.

[Take the First Step \(https://link.prudential.com/#/\)](https://link.prudential.com/#/)



## The State of US

A comprehensive study and documentary series about the challenges that stand in the way of America's financial wellness.

Explore the Findings (<https://www.prudential.com/campaign/state-of-us>)

### Save. Invest. Protect. Subscribe.

Planning ahead for your financial future may not be easy, but it can be easier—with ideas and insights delivered right to your inbox.

First Name

Last Name

Email Address

Sign up



Get a Life Insurance Quote

By answering a few quick questions, you'll get a sense of what it might take to protect your family for the long-term.

Get Quote (<https://edgpruquote.prudential.com/eDG/pruquote/pruquotemainproc.jsp?flow=essential&campaignid=040152&campaignextension=001013&se>)



### On Track for Retirement?

Are you saving enough money to afford the retirement you dream about? Use our retirement calculator.

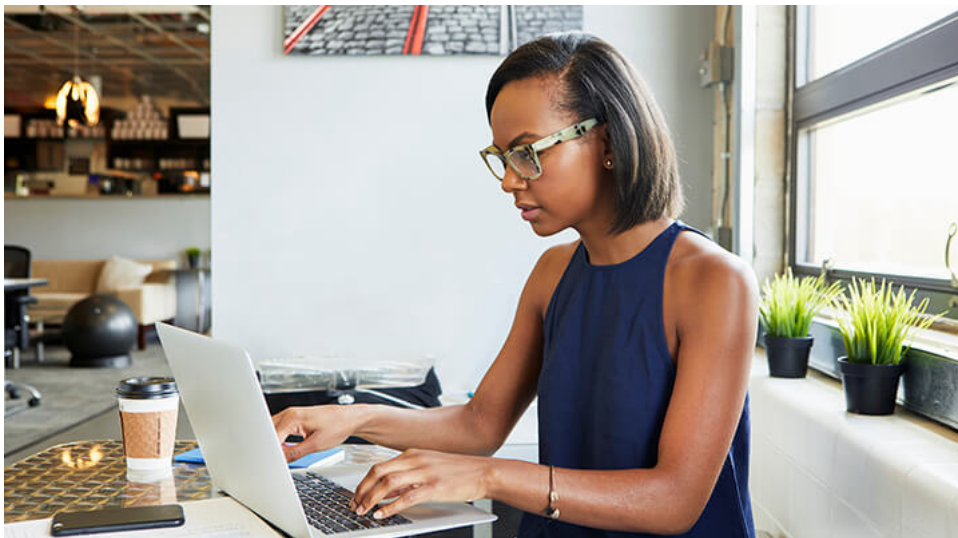
Get Started (<https://www.prudential.com/financial-education/retirement-calculator>)



### Find a Financial Professional

Locate financial professionals working in your area, just by entering your zip code. Start moving toward your financial future today!

ZIP Code  Connect Now (<https://www.prudential.com/common/findfinancialprofessional?type=bylocation&term=>)



## File a Life Insurance Claim

Filing a life insurance claim online is fast, simple and secure. Follow the link below and we'll walk you through the process.

🔗 [Submit a Claim \(https://www.prudential.com/personal/life-insurance/death-claims/file-a-claim\)](https://www.prudential.com/personal/life-insurance/death-claims/file-a-claim)



## Be Informed About Finances

Expand your financial education with insightful information, actionable advice and easy-to-use tools.

🔗 [Start Learning \(https://www.prudential.com/financial-education\)](https://www.prudential.com/financial-education)



## Retire with Income for Life

Planning for a steady, protected monthly income is one of the most important steps you can take in preparing for a secure financial future. Annuities can help.

[Start Now \(?\)](#)

1dmy&pswid=Z7\_G802HJS0M8QK40QS0FAKF31ET3&urile=wcm%3apath%3a/wps/wcm/connect/portal+site/z6\_000000000000000000000000a0/z6\_9a0i18c0l0po80am2vkmno2g20/zf

Follow us on:

[f](#) [in](#) [@](#) [v](#) [t](#) [p](#)  
(https://www.prudential.com/links/financial/) (https://www.prudential.com/links/financial/) (https://www.prudential.com/links/financial/) (https://www.prudential.com/links/financial/) (https://www.prudential.com/links/financial/)

[Help \(https://www.prudential.com/contact-us\)](https://www.prudential.com/contact-us)

[Report Fraud \(https://www.prudential.com/links/report-fraud\)](https://www.prudential.com/links/report-fraud)

[Terms & Conditions \(https://www.prudential.com/links/terms-conditions\)](https://www.prudential.com/links/terms-conditions)

[Privacy Center \(/links/privacy-center\)](https://www.prudential.com/links/privacy-center)

[Online Privacy Statement \(https://www.prudential.com/links/privacy-statement\)](https://www.prudential.com/links/privacy-statement)

[Accessibility \(https://www.prudential.com/links/about/accessibility-form\)](https://www.prudential.com/links/about/accessibility-form)

[NY - Domestic Violence Notice \(https://www.prudential.com/links/ny-domestic-violence\)](https://www.prudential.com/links/ny-domestic-violence)

[Alert for Illinois Customers \(https://www.prudential.com/links/illinois-customers\)](https://www.prudential.com/links/illinois-customers)

[Business Integrity \(https://www.prudential.com/links/business-integrity\)](https://www.prudential.com/links/business-integrity)

[Sitemap \(https://www.prudential.com/sitemap\)](https://www.prudential.com/sitemap)

[Check the background of this firm on FINRA's BrokerCheck \(http://brokercheck.finra.org/\)](http://brokercheck.finra.org/)

[AdChoices \(http://preferences-mgr.truste.com/?pid=prudential01&aid=prudential01&size=default\)](http://preferences-mgr.truste.com/?pid=prudential01&aid=prudential01&size=default)

LINK by Prudential is an umbrella marketing name for Prudential Customer Solutions LLC ("PCS"), Prudential Annuities Distributors, Inc. and various subsidiaries of The Prudential Insurance Company of America. Investment advisory products and services of LINK by Prudential are made available through PCS, an SEC registered investment adviser. PCS is not a licensed insurance agency or broker. Prudential LINK and LINK by Prudential occasionally may be referred to as LINK.

Securities products and services are offered through: Pruco Securities, LLC and Prudential Investment Management Services, LLC, both members SIPC (<http://www.sipc.org/>) and located in Newark, NJ, or Prudential Annuities Distributors, Inc., located in Shelton, CT. All are Prudential Financial companies (<https://www.prudential.com/links/privacy-center>) . Statement of Financial Condition (<http://www.retire.prudential.com/view/page/rs/17317>) for Prudential Investment Management Services, LLC.

Insurance and/or annuities are issued by The Prudential Insurance Company of America, Pruco Life Insurance Company (except in NY and/or NJ), Pruco Life Insurance Company of New Jersey (in NY and/or NJ), and Prudential Annuities Life Assurance Corporation (PALAC). Each is a Prudential Financial company located in Newark, NJ (main office), except for PALAC which is located in Shelton, CT (main office), and each is solely responsible for its own financial condition and contractual obligations.

Variable annuities are distributed by Prudential Annuities Distributors, Inc., Shelton, CT.

Retirement products and services are provided by Prudential Retirement Insurance and Annuity Company, Hartford, CT, or its affiliates .

This web page is being provided for informational or educational purposes only and does not take into account the investment objectives or financial situation of any client or prospective clients. The information is not intended as investment advice and is not a recommendation about managing or investing your retirement savings. Clients seeking information regarding their particular investment needs should contact a financial professional. Prudential Financial, its affiliates, and their financial professionals do not render tax or legal advice. Please consult with your tax and legal advisors regarding your personal circumstances.

This website is for U.S. persons only (<https://www.prudential.com/links/privacy-center>) and may not be approved in all states. Information contained on this site does not and is not intended to constitute an advertisement, solicitation or offer for sale in any jurisdiction, outside the United States of America, where such use would be prohibited or otherwise regulated.

"Prudential Advisors" is a brand name of The Prudential Insurance Company of America and its subsidiaries.

Prudential, the Prudential logo, the Rock Symbol and Bring Your Challenges are service marks of Prudential Financial, Inc. and its related entities, registered in many jurisdictions worldwide.

Prudential Financial, Inc. of the United States is not affiliated with Prudential plc, which is headquartered in the United Kingdom.

Pruco Life Insurance Company, an Arizona company - California COA # 3637. The Prudential Insurance Company of America - California COA # 1179. Prudential Retirement Insurance and Annuity Company - California COA # 08003. The Prudential Life Insurance Company of America Newark, NJ.

Securities and Insurance Products:

Not Insured by FDIC or any Federal Government Agency | May Lose Value | Not a Deposit of or Guaranteed by the Bank or any Bank Affiliate.

Template: 1000797-00001-00

---

© 2019 Prudential Financial, Inc. and its related entities.

---



## The fast track to investing starts here

Open a managed account in minutes and pay NO advisory fees for 90 days.

Open Account Now ([https://link.prudential.com/express/investing/?intcmp=co\\_maxy\\_linkexpress-90day-creative2\\_hp\\_inter\\_prosp\\_](https://link.prudential.com/express/investing/?intcmp=co_maxy_linkexpress-90day-creative2_hp_inter_prosp_))

See Offer Details ([https://www.prudential.com/personal/link-by-prudential/no-fees-90-days/?intcmp=co\\_maxy\\_linkexpress-90day-creative2\\_hp-feh\\_inter\\_prosp\\_est-fam](https://www.prudential.com/personal/link-by-prudential/no-fees-90-days/?intcmp=co_maxy_linkexpress-90day-creative2_hp-feh_inter_prosp_est-fam))