

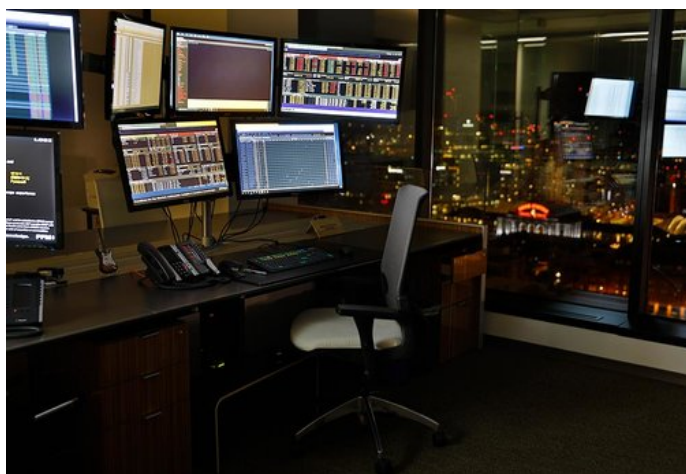
HOME (/)

DISCLAIMER (/DISCLAIMER)

# PROPRIETARY CAPITAL

(/home)

**CAPTURING VALUE**  
from inefficiencies within a  
**COMPLEX MARKETPLACE**



## WHO WE ARE

Proprietary Capital, founded in 1997, is an alternative investment management firm that provides an institutional platform for investors to gain exposure to niche sectors within the U.S. residential mortgage market.

Over the firm's twenty-year history, Proprietary Capital has managed capital in commingled and single-investor portfolios for prominent U.S. based endowments and foundations, faith-based organizations, hospital systems, family offices, outsourced CIO providers, fund of hedge funds, and other domestic and foreign institutional investors.

## CONTACT US

### Proprietary Capital, LLC

1800 Larimer St. Suite 1825

Denver, CO 80202

Office: (303) 575-9084 (TEL:3035759084)

Fax: (303) 260-7785



ADMINISTRATOR LOGIN ([HTTPS://SECURELOGIN.GLOBEOP.COM/LOGIN/UI/LOGIN?REALM=EXTERNAL2&GOTO=HTTPS%3A%2F%2FSECURE2.GLOBEOP.COM%2FHOME%2FHOME.GO](https://securelogin.globeop.com/login/ui/login?REALM=EXTERNAL2&GOTO=HTTPS%3A%2F%2FSECURE2.GLOBEOP.COM%2FHOME%2FHOME.GO))

PROPRIETARY CAPITAL, 1800 LARIMER STREET, SUITE 1825, DENVER, CO, 80202,  
UNITED STATES