

## ARSENAL OVERVIEW

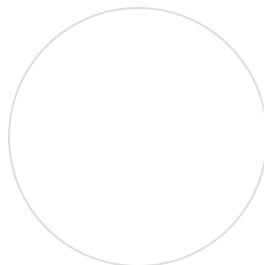
Established in 2000, Arsenal Capital Partners is a leading New York based private equity firm that specializes in control investments in Specialty Industrials and Healthcare businesses. Arsenal works with management teams to build strategically important companies with leading market positions, high growth, and high value-add. Since inception, Arsenal has raised institutional equity investment funds of approximately \$3.0 billion.



## SPECIALTY INDUSTRIALS

Niche specialty chemicals and specialty materials sub-sectors with valuable technologies that can provide product and service differentiation. Arsenal seeks businesses that service end markets where it has deep experience and insights.

**[READ MORE \(/FOCUS/SPECIALTY-INDUSTRIALS\)](#)**



# HEALTHCARE

Outsourced business services companies that focus on biopharmaceutical research, development and commercialization, and business services to providers and payors. Arsenal seeks businesses that leverage information and technology to improve efficiency and reduce costs.

[READ MORE \(/FOCUS/HEALTHCARE\)](#)

## OUR PORTFOLIO

- [\(/portfolio/hope](#)



[HOPEBRIDGE, LLC \(/PORTFOLIO/HOPEBRIDGE-LLC\)](#)

- [\(/port](#)



[ACCUMEN \(/PORTFOLIO/ACCUMEN\)](#)

-

(/portfo



BIOIVT (/PORTFOLIO/BIOIVT)

(/portfolio/certara)



CERTARA (/PORTFOLIO/CERTARA)

(/portfolio/chroma-colo



CHROMA COLOR CORPORATION (/PORTFOLIO/CHROMA-COLOR-CORPORATION)

(/portfolio/cps-performance-materials)



CPS PERFORMANCE MATERIALS (/PORTFOLIO/CPS-PERFORMANCE-MATERIALS)

(/portfolio/fralock)



FRALOCK (/PORTFOLIO/FRALOCK)

(/portfolio/hope)



HOPEBRIDGE, LLC (/PORTFOLIO/HOPEBRIDGE-LLC-0)

(/portfc)



MERIDIAN ADHESIVES (/PORTFOLIO/MERIDIAN-ADHESIVES)

- (/portfolio/polymer-solutions-group)



POLYMER SOLUTIONS GROUP (/PORTFOLIO/POLYMER-SOLUTIONS-GROUP)

- (/portfolio/polytek-development-corp)



POLYTEK DEVELOPMENT CORP. (/PORTFOLIO/POLYTEK-DEVELOPMENT-CORP)

- (/portfolio/spart



SPARTECH (/PORTFOLIO/SPARTECH)

- (/portfolio/tractmar



# TractManager

Smarter decisions. Smarter healthcare.

TRACTMANAGER (/PORTFOLIO/TRACTMANAGER)

(/portfolio/wcg)



WCG (/PORTFOLIO/WCG)

(/portfolio/accella)



ACCELLA (/PORTFOLIO/ACCELLA)

(/portfolio/certara)



CERTARA (/PORTFOLIO/CERTARA)

(/portfolio/charter-brokerage)



CHARTER BROKERAGE (/PORTFOLIO/CHARTER-BROKERAGE)

(/portfolio/chromaflo-tech



CHROMAFLO TECHNOLOGIES (/PORTFOLIO/CHROMAFLO-TECHNOLOGIES)

(/portfolio/d



DG3 (/PORTFOLIO/DG3)

(/portfolio/elite-comfort-solutions)



ELITE COMFORT SOLUTIONS (/PORTFOLIO/ELITE-COMFORT-SOLUTIONS)

(/portfolio/flowchem)



FLOWCHEM (/PORTFOLIO/FLOWCHEM)

(/portfolio/genovique-specialties)



GENOVIQUE SPECIALTIES (/PORTFOLIO/GENOVIQUE-SPECIALTIES)

(/portfolio/idq)







IDQ (/PORTFOLIO/IDQ)

•

(/portfolio/igm-specialties)



IGM SPECIALTIES (/PORTFOLIO/IGM-SPECIALTIES)

•

(/portfolio/imds)



IMDS (/PORTFOLIO/IMDS)

•

(/portfolio/inhance-technologies)



(/portfolio/kel-tech)



KEL-TECH (/PORTFOLIO/KEL-TECH)

(/por



NOVOLYTE TECHNOLOGIES (/PORTFOLIO/NOVOLYTE-TECHNOLOGIES)

(/portfolio/priority-solutions)



PRIORITY SOLUTIONS (/PORTFOLIO/PRIORITY-SOLUTIONS)

(/portfolio/re



RENAISSANCE  
MARK

RENAISSANCE MARK (/PORTFOLIO/RENAISSANCE-MARK)

(/portfolio/royal-adhesiv

**ROYAL**

**ADHESIVES & SEALANTS**

ROYAL ADHESIVES & SEALANTS (/PORTFOLIO/ROYAL-ADHESIVES-SEALANTS)

(/portfolio/scientific-

**SPL**™

SCIENTIFIC PROTEIN LABORATORIES (/PORTFOLIO/SCIENTIFIC-PROTEIN-LABORATORIES)

(/portfolio/sermatech-international)

 **SERMATECH**®  
International

SERMATECH INTERNATIONAL (/PORTFOLIO/SERMATECH-INTERNATIONAL)

(/portfolio/solvaira-specialties)



SOLVAIRA SPECIALTIES (/PORTFOLIO/SOLVAIRA-SPECIALTIES)

(/portfolio/source-refrigeration-hvac)



SOURCE REFRIGERATION & HVAC (/PORTFOLIO/SOURCE-REFRIGERATION-HVAC)

(/portfolio/tallygenicom)



TALLYGENICOM (/PORTFOLIO/TALLYGENICOM)

(/portfolio/v



# Vertellus®

[VERTELLUS SPECIALTIES \(/PORTFOLIO/VERTELLUS-SPECIALTIES\)](#)

(/portfolio/wcg)



**WCG**<sup>™</sup> WIRB  
COPERNICUS  
GROUP®

[WCG \(/PORTFOLIO/WCG\)](#)

[FULL PORTFOLIO \(/PORTFOLIO\)](#)

## LATEST NEWS

July 2, 2019

[MERIDIAN ADHESIVES GROUP ACQUIRES POLYCOM \(/NEWS/MERIDIAN-ADHESIVES-GROUP-ACQUIRES-POLYCOM\)](#)

Meridian Adhesives Group announced today the acquisition of PolyCom Industries, LLC and its affiliate Eco Dispersions, LLC (“Polycom”), a

- June 14, 2019

**ACCUMEN ACQUIRES HALFPENNY TECHNOLOGIES (/NEWS/ACCUMEN-ACQUIRES-HALFPENNY-TECHNOLOGIES)**

Accumen Inc. has acquired Halfpenny Technologies Inc., a Pennsylvania-based leader in data performance through its industry-leading clinical data

- June 11, 2019

**POLYTEK® DEVELOPMENT CORP. ANNOUNCES ACQUISITION OF PRO MARINE SUPPLIES (/NEWS/POLYTEKR-DEVELOPMENT-CORP-ANNOUNCES-ACQUISITION-PRO-MARINE-SUPPLIES)**

Polytek® Development Corp., a manufacturer of specialty polymers for mold making and casting applications, announced today the acquisition of Pro

**[ALL NEWS \(/NEWS\)](#)**

## **OUR TEAM**





Terrence Mullen (</team/terrence-mullen>)

CO-MANAGING PARTNER & CO-CHIEF INVESTMENT OFFICER





**Jeffrey Kovach** (</team/jeffrey-kovach>)

CO-MANAGING PARTNER & CO-CHIEF INVESTMENT OFFICER







Joelle Marquis (/team/joelle-marquis)

SENIOR PARTNER





Stephen McLean (/team/stephen-mclean)

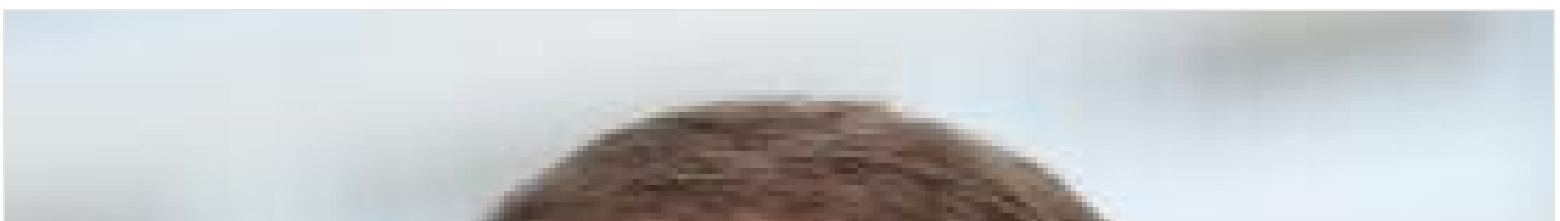
SENIOR PARTNER





John Televantos (</team/john-televantos>)

SENIOR PARTNER





Timothy Zappala (/team/timothy-zappala)

SENIOR PARTNER



Donald Deieso (/team/donald-deieso)

OPERATING PARTNER



Eugene Gorbach (/team/eugene-gorbach)

INVESTMENT PARTNER



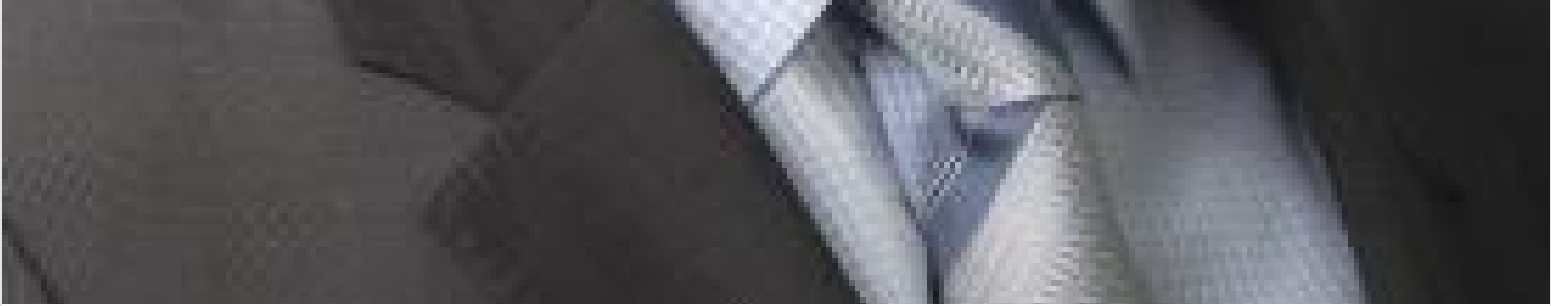


Brian Orkin (/team/brian-orkin)

INVESTMENT PARTNER







Joseph Rooney (/team/joseph-rooney)

INVESTMENT PARTNER





Roy Seroussi (</team/roy-seroussi>)

INVESTMENT PARTNER





John DiGiovanni (</team/john-digiovanni>)

PRINCIPAL





David Spaight (/team/david-spaight)

OPERATING PARTNER





Richard Colonel (/team/richard-colonel)

OPERATING PARTNER





Salvatore Gagliardo (/team/salvatore-gagliardo)

OPERATING PARTNER





Jeremy Goldberg (/team/jeremy-goldberg)

OPERATING PARTNER





Michael O'Connor (/team/michael-oconnor)

OPERATING PARTNER







Barry G. ("BG") Porter (/team/barry-g-bg-porter)

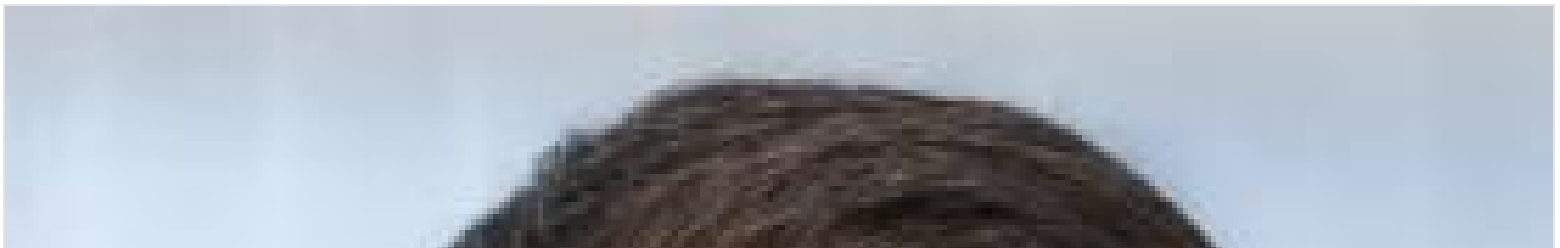
OPERATING PARTNER





Ryan Berman (/team/ryan-berman-0)

VICE PRESIDENT





Robert Cahill (/team/robert-cahill)

VICE PRESIDENT





Jessica Delfino (/team/jessica-delfino)

VICE PRESIDENT



Robert Farmer (/team/robert-farmer)

SENIOR ASSOCIATE

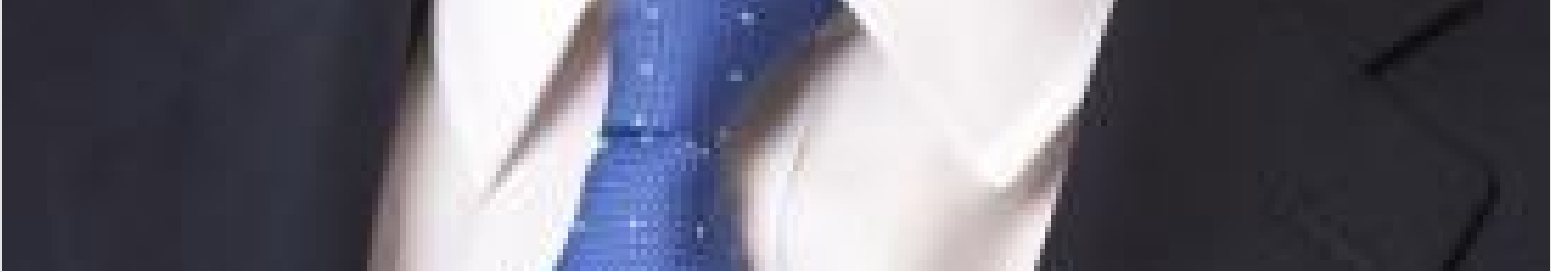




Taylor Holland (/team/taylor-holland)

SENIOR ASSOCIATE





Jonathan Mattern (/team/jonathan-mattern)

SENIOR ASSOCIATE







Ian Chan (/team/ian-chan)

ASSOCIATE





Devon Gobbo (</team/devon-gobbo>)

ASSOCIATE





Henrik Hartmann (</team/henrik-hartmann>)

ASSOCIATE





Thomsen Hearne (/team/thomsen-hearne)

ASSOCIATE

•

(/team/erin-mulrooney)

Erin Mulrooney (/team/erin-mulrooney)

ASSOCIATE





Frank Scrudato (</team/frank-scrudato>)

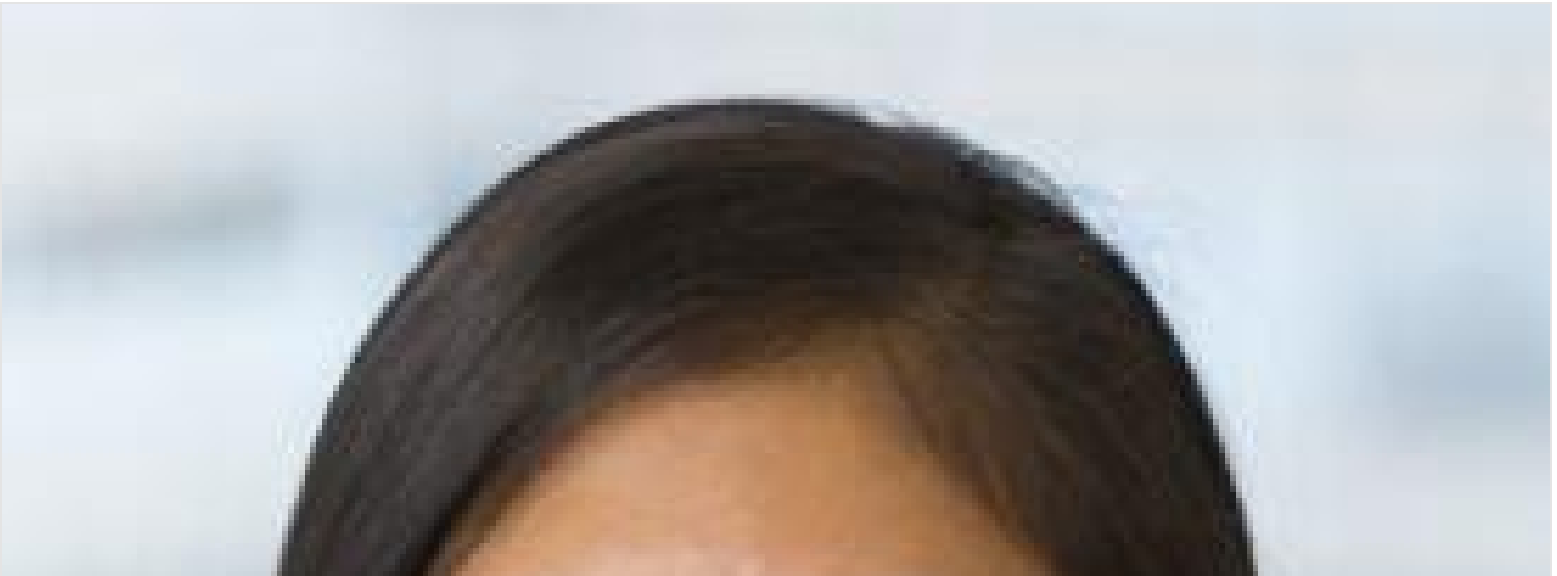
CHIEF FINANCIAL OFFICER; CHIEF COMPLIANCE OFFICER





Patricia Grad (</team/patricia-grad>)

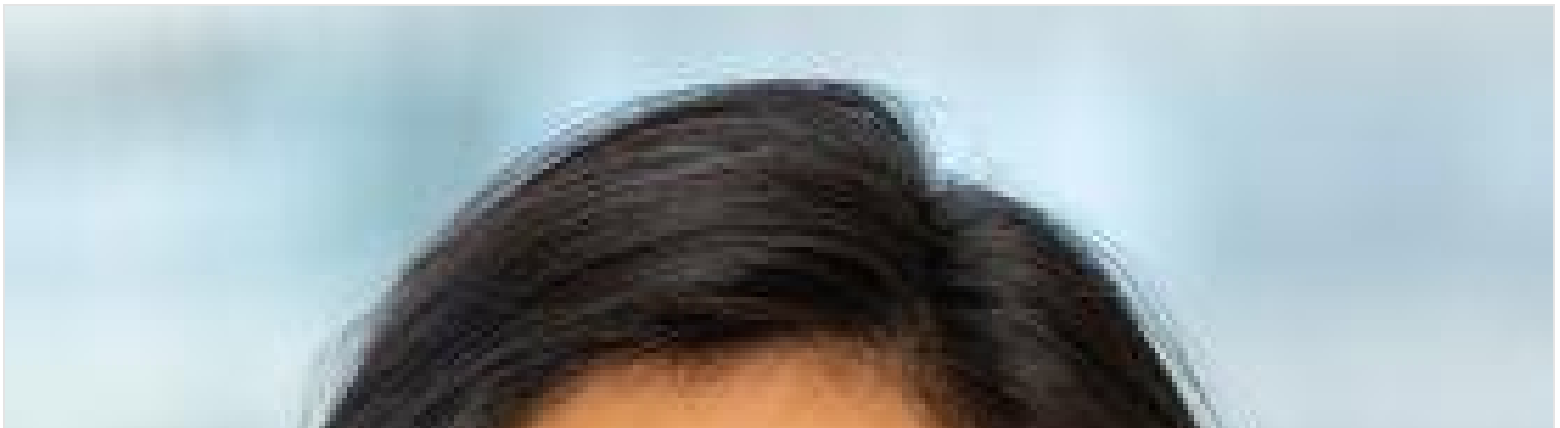
SENIOR MANAGING DIRECTOR, HEAD OF INVESTOR RELATIONS





Elisabetta Zhang (/team/elisabetta-zhang)

VICE PRESIDENT OF FINANCE

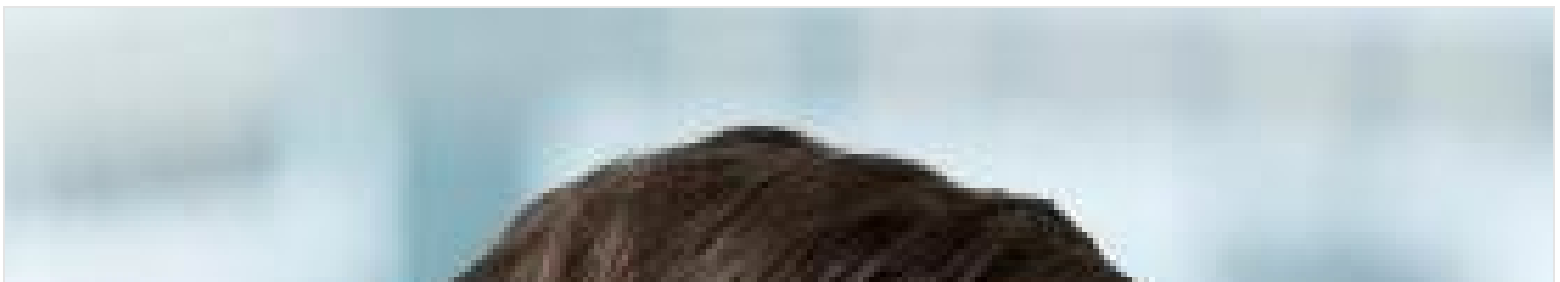






Diana Danczuk (</team/diana-danczuk>)

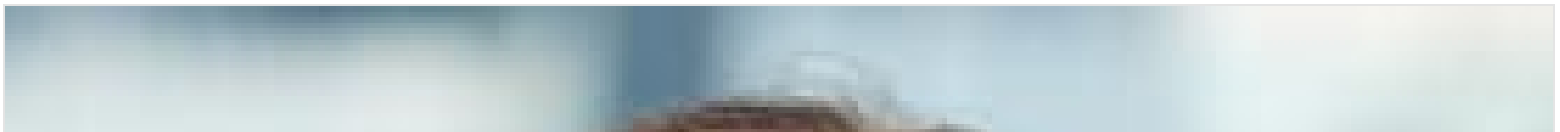
SENIOR FUND ACCOUNTANT





Victor Shaffer (</team/victor-shaffer>)

SENIOR FUND ACCOUNTANT





Irina Avrorina (</team/irina-avrorina>)

ACCOUNTANT



Madison Meyer (/team/madison-meyer)

ANALYST





Robin Feder (/team/robin-feder)

PROJECT COORDINATOR





William Farrell ([/team/william-farrell](#))

FIRM ADVISOR





Thomas E. Tuft (/team/thomas-e-tuft)

FIRM ADVISOR

[TEAM PAGE \(/TEAM\)](/TEAM)

## ABOUT ARSENAL

Arsenal Capital Partners is a specialized private equity firm that invests in the U.S. middle market with a narrow and deep focus in two sectors, Specialty Industrials and Healthcare. Our philosophy is to partner with talented management teams, provide them with access to world-class operating resources and patient capital, and develop positive, open and constructive relationships that foster long-term value creation.

[ABOUT \(/ABOUT\)](/ABOUT)

---

[FOCUS \(/FOCUS\)](/FOCUS)

---

[PORTFOLIO \(/PORTFOLIO\)](/PORTFOLIO)

---

[TEAM \(/TEAM\)](/TEAM)

---

[NEWS \(/NEWS\)](/NEWS)

---

[CONTACT \(/CONTACT\)](/CONTACT)

---

[CONTACT US](#)



100 Park Avenue  
31st Floor  
New York, NY 10017

☎ +1 212 771 1717 (tel:12127711717)

✉ info@arsenalcapital.com (mailto:info@arsenalcapital.com)

---

Copyright © 2019 Arsenal Capital Partners · All rights reserved · [Disclaimer \(/disclaimer\)](#) · [Privacy Notice \(/privacy-notice\)](#)

[\(/privacy-notice\)](#)

[\(/privacy-notice\)](#)

[\(/privacy-notice\)](#)

[\(/privacy-notice\)](#)

[\(/privacy-notice\)](#)

[\(/privacy-notice\)](#)

[\(/privacy-notice\)](#)

[\(/privacy-notice\)](#)

[\(/privacy-notice\)](#)

[\(/privacy-notice\)](#)